



Ag Alert!

Guava Root-Knot Nematode (GRKN)

Refers to microscopic worms in the soil that infect sweet potatoes and form knots or galls on the roots. You can spot the bumps and root galls, but nematodes can only be seen with a microscope.

GRKN is a major threat to the N.C. sweet potato industry – **it's up to you to make a difference**

How It Spreads

GRKN is mainly spread by humans through infested soil on equipment or the crop.

Help Reduce the Spread Of GRKN By:

- Remove all soil and plant debris before packing
- Look for symptoms like galls / blisters
- Tell your supervisor if you spot any of these signs!

What to Look for:

- Knots or galls (on body or roots)
- Bumpy surface
- Surface pimples
- Bumps with lesions

If You Spot a Sweet Potato with Symptoms of GRKN...

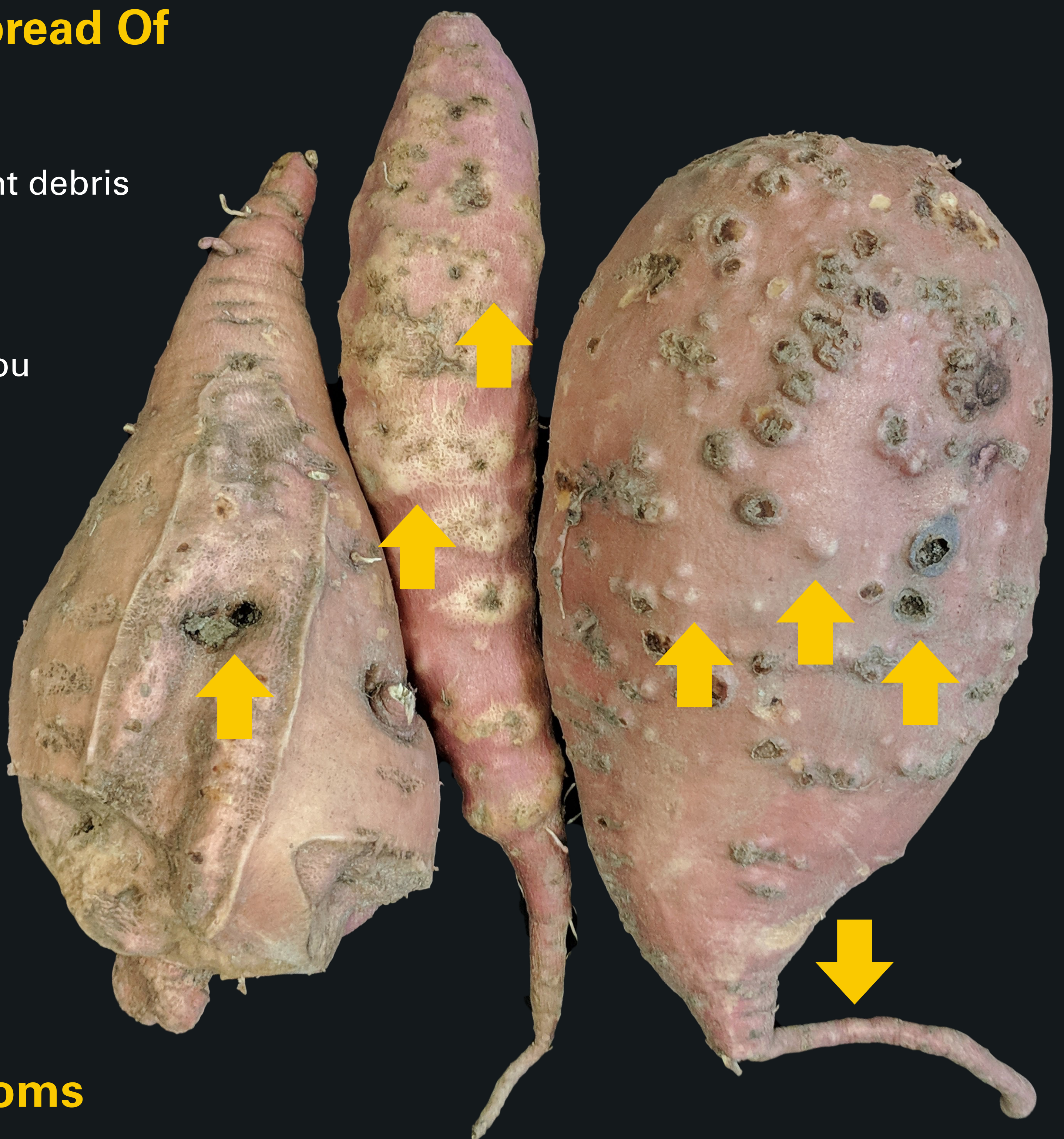


Photo credit: Camilo Parada, Hunter Collins, and Lina Quesada, Dept of Entomology and Plant Pathology

1

STOP
the packing line

2

CONTACT
your supervisor
immediately

3

REMOVE
entire lot, isolate
in secure location

4

CALL
NCDA&CS
to arrange inspection